

Useful information

If you have any queries or require any further information about your child's appointment, please contact:

The Child Development Centre
Sandy Lane
Orford
Warrington
WA2 9HY

Telephone :01925 946483

Please ask for the Community Paediatric Audiology Department.

Local Community Pharmacy - Your local community pharmacies offer a wide range of services including information and general advice on symptom relief medicines as well as a prescription collection and delivery service.

For impartial and confidential advice or information on the services provided by Bridgewater or to receive this leaflet in an alternative format call our Patient Services team on 0800 587 0562.



www.twitter.com/Bridgewater_NHS



www.facebook.com/BridgewaterNHS

Visit our website at: www.bridgewater.nhs.uk



**Bridgewater
Community Healthcare**
NHS Foundation Trust

Community Paediatric Audiology

Information for parents and carers about Glue Ear



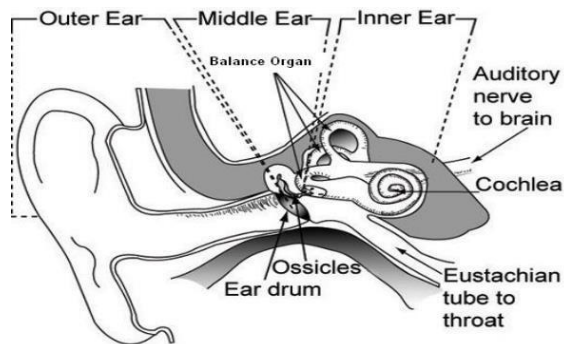
What is glue ear?

- Glue ear is a condition which affects many young children and is more common in the winter months.
- It is fluid that builds up behind the ear drum in a space called the middle ear which is usually filled with air.
- It can affect one or both ears at any one time.
- It usually improves by itself but in some cases it can persist and may cause hearing loss.
- It is really important to have a hearing test to check how glue ear is affecting your child's hearing.

Why causes glue ear?

Following coughs, colds or ear infections, mucus may remain in the middle ear space for a long period of time.

This is because the tube that connects the middle ear to the back of the throat (Eustachian tube) is not working well; this may affect your child's hearing.



How can I help?

- Attract your child's attention before you speak to them.
- Speak clearly and do not shout.
- Let your child see your face when you speak to them.
- Keep background noise to a minimum.
- Inform school, nursery or anyone who looks after your child to do the same.

What happens after the hearing test?

- We will review your child in three months for a repeat hearing test. This is national guidance called watchful waiting.
- If your child only has a mild hearing loss with no other problems, then their hearing will continue to be monitored.
- Children with persistent glue ear, causing hearing loss, may be referred to an Ear, Nose and Throat (ENT) Consultant.
- If you have an ENT appointment, a decision to insert grommets may be made. Temporary fitting of hearing aids may also be considered.

What are grommets?

Grommets are small ventilation tubes that are inserted into the eardrum under general anaesthetic. They help children to hear better.